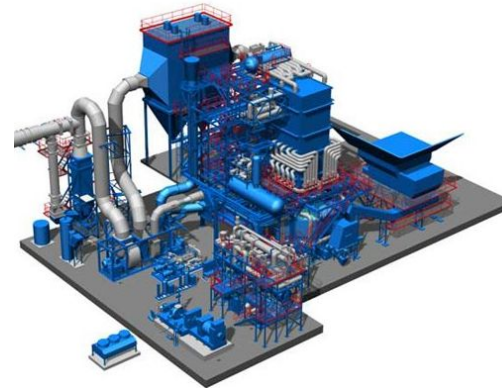


Engineering, Plants, Port Equipment, Heavy Transportations & Contractor



COMPANY PROFILE AND REFERENCES since 2010





LIFT CARGO TRANSPORT srl

- **Date of foundation:** 2010, on January
- **Capital:**
Euro 50.000 (fifty thousand)
- **Headquarters and Technical Office**

Via Garibaldi, 74 – 96011 – AUGUSTA (SR)– surface area offices mq 300

tel. +39 0931 769411 - fax +39 0931 769411

E-mail: info@lctransport.it – salvo@lctransport.it- +39 335 455454



• Fiscal data:

C.C.I.A.A. of SIRACUSA	n. 01699700892
VAT number and Fiscal Code	01699700892

Up today, LCT has assembled a strong team of experts and IT has a considerable impact on the multiprocessing plant engineering design market, with strong proved skill.

A particular care is also devoted to the traditional work-activities and to new conception and research works as well, aiming at a single result: customer satisfaction.



Main activities

- Special Transport unconventional
- Steel plants
- Port equipments, maintenance and revamping

Others activities

- Chemical and petrochemical plants
- Off shore installations
- Oil and Gas Plants
- Refineries



SERVICES

- Maintenance Engineering
 - Detailed executive planning
 - Works Management and supervision
 - Turnkey contracts
 - Environmental impacts assessment
 - Technical Consulting
 - Analysis of feasibility
 - Industrial installations
-



Main customers

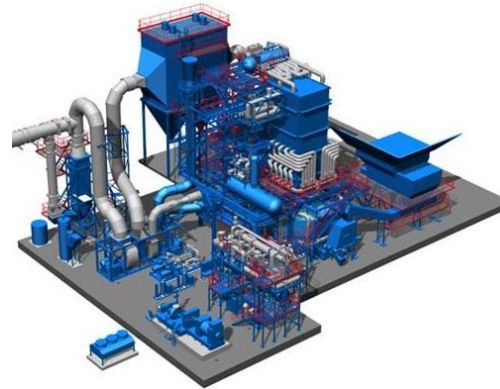
- FANTUZZI REGGIANE
- SAIPEM
- TECHNIP ITALY
- ILVAFORM (Riva Group)
- LUCCHINI
- TEREX – DEMAG
- PSA- Voltri Terminal Europe Genova
- Autorità Portuale di Palermo
- Bezzina group- Malta
- Freeport MALta
- TECHINT-TENOVA
- Eon Produzione Spa
- Terminal Darsena Toscana – LIVORNO
- Venezia Container Terminal – VENEZIA
- Porto di Napoli – Terminal CONATECO
- Porto di Napoli – Terminal SOTECO
- Porto di La Spezia – Terminal container
- Roma Container Terminal – Civitavecchia
- Taranto Container Terminal –
- Fos sur Mer terminal Container

Others customers

- A2A - STIR
- BELLELI ENERGY
- FERROVIE DELLO STATO
- NOELL
- I.P.E.M. S.p.A. (Liquigas)
- RAFFINERIA DI MILAZZO
- REGGIANE CRANES AND PLANTS
- ELETTROGAS DELIMARA MALTA
- DANIELI
- ENIPOWER
- ENEL PRODUZIONE
- FINCANTIERI
- ILVAFORM (Riva Group)
- KUWAIT PETROLEUM
- RAFFINERIA DI GELA

With some of these Customers, the company has established constant collaboration, drawing up business agreements renewed from year-to-year. This kind of service has gained the confidence pleased by the Company, so giving a large contribution to the activities and updating process-development, finalized to the professional growth of its own employees.

Contructions, Revamping, Heavy Trasportations division



Main works - photogallery



Caivano STIR – A2A Group Year 2010

Rubbish treatment plants – Grabs maintenance. N°4 QTY

The maintenance of the bucket was carried out at our workshop. The intervention has involved the complete overhaul of the Hydraulic components and the metal structure.

Before....



..after....





Raffineria Milazzo – ENI – Year 2011

Supply and installation of castle support desulphurisation plant.
weight supply: 80.000 Kg



V.T.E. – Voltri Terminal Europa – Genova Voltri

R.M.G. electric-mechanical revamping – november - december 2011

VTE Voltri Terminal PSA Group, a world leader in the management of terminals ports for containers, has given us the maintenance of a railroad trasterainer. We have organized our work into two phases: a review of the electrical parts and review of the mechanical parts.



.....revamping operations



TERMINAL DARSENA TOSCANA – LIVORNO

December 2011- January 2012

Our client asked us to demolish the flights of stairs, two STS cranes and supply and fit the new rampants. We have built new stairs in our workshops, and after having demolished the existing scale, we proceeded to check the conditions of the support structures and installation of new elements from zero to sixty meters.



Port of PALERMO – Year 2010

Disassembly and demolition of a RMG FANTUZZI REGGIANE





Raffineria di Milazzo S.C.p.A.- year 2010

Marine loading arms

Dismantling phase



.... positioning phase from barge....



.....test phase.





Raffineria di Milazzo S.C.p.A.- year 2012 New power station SS10



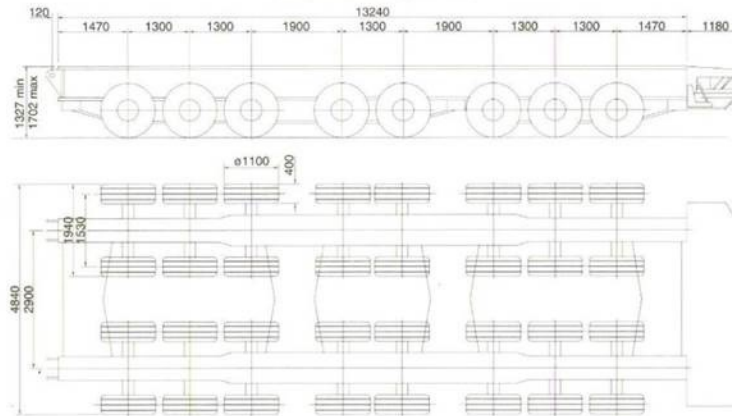
Special heavy transport and assets – Lift Cargo Transport (SR) owner

- Lift Cargo Transport (Siracusa) are specialized in heavy transportation and unconventional lots, unloading and handling of portainer cranes and special equipments (tanks, off shore modules..)
- These activities, performed by qualified personnel, shall be effected by the use of special hydraulic self propelled trolley.

Our special hydraulic self propelled trolley 650 ton each



SELF PROPELLED and SELF ELEVATING TRAILER 650 Tonn



TECHNICAL CHARACTERISTICS

- LOAD BEARING CAPACITY	650.000 KGS
- EMPTY WEIGHT	65.000 KGS
- MAXIMUM LENGTH	14.880 MM
- MAXIMUM WIDTH	4.840 MM
- MINIMUM HEIGHT OF LOADING SURFACE	1.327 MM
- MAXIMUM HEIGHT OF LOADING SURFACE	1.702 MM
- NUMBER OF WHEELS	32
- TYRES	46x13-28 PLY RATING
- TYRES PRESSURE	9 BAR
- STEERING/LIFT CIRCUIT MAX PRESSURE	170 BAR
- TRANSLATION CIRCUIT MAX PRESSURE	350 BAR
- BRAKING CIRCUIT MINIMUM PRESSURE	15 BAR
- BRAKING CIRCUIT MAXIMUM PRESSURE	50 BAR
- TURNING RADIUS	22 MT
- AXLE TRACK	1.530 MM



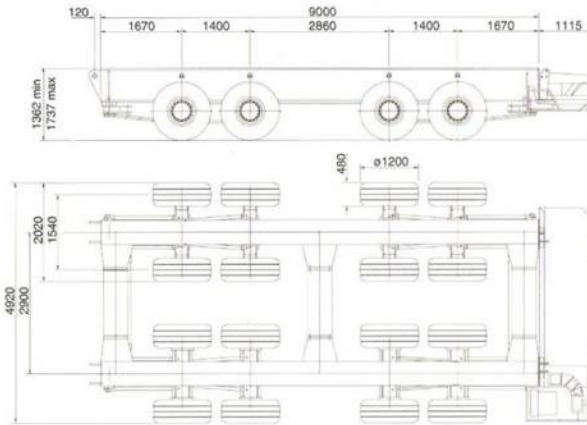
DET NORSKE VERITAS
Tested and Certified



Our special hydraulic self propelled trolley 375 ton each



SELF PROPELLED and SELF ELEVATING TRAILER 375 Tonn



TECHNICAL CHARACTERISTICS

- LOAD BEARING CAPACITY 375.000 KGS
- EMPTY WEIGHT 32.500 KGS
- MAXIMUM LENGTH 10.340 MM
- MAXIMUM WIDTH 4.920 MM
- MINIMUM HEIGHT OF LOADING SURFACE 1.362 MM
- MAXIMUM HEIGHT OF LOADING SURFACE 1.737 MM
- NUMBER OF WHEELS 16
- TYRES 49x19x20-30 PLY RATING
- TYRES PRESSURE 9 BAR
- STEERING/LIFT CIRCUIT MAX PRESSURE 185 BAR
- TRANSLATION CIRCUIT MAX PRESSURE 350 BAR
- BRAKING CIRCUIT MINIMUM PRESSURE 15 BAR
- BRAKING CIRCUIT MAXIMUM PRESSURE 50 BAR
- TURNING RADIUS 10 MT
- AXLE TRACK 1.540 MM



DET NORSKE VERITAS
Tested and Certified



Our special electronic modules

TECHNICAL FEATURES		MULTI-TRUCK SET		MULTI-TRUCK SET	
BY APPROXIMATE WEIGHT					
40000 kg					
E-AXLE CONFIG		40000 kg		40000 kg	
MODEL	ACT 40000	ACT 40000	ACT 40000	ACT 40000	ACT 40000
GROUP NUMBER	1	1	1	1	1
TRUCK WEIGHT	40000	40000	40000	40000	40000
E-AXLE CONFIG		40000 kg		40000 kg	
MODEL	ACT 40000	ACT 40000	ACT 40000	ACT 40000	ACT 40000
GROUP NUMBER	1	1	1	1	1
TRUCK WEIGHT	40000	40000	40000	40000	40000
E-AXLE CONFIG		40000 kg		40000 kg	
MODEL	ACT 40000	ACT 40000	ACT 40000	ACT 40000	ACT 40000
GROUP NUMBER	1	1	1	1	1
TRUCK WEIGHT	40000	40000	40000	40000	40000
E-AXLE CONFIG		40000 kg		40000 kg	
MODEL	ACT 40000	ACT 40000	ACT 40000	ACT 40000	ACT 40000
GROUP NUMBER	1	1	1	1	1
TRUCK WEIGHT	40000	40000	40000	40000	40000



ILVA Taranto Plant – Trasportation from assembly site to berth on one big trap carbon crane TENOVA – total weight 2720 ton – N°7 self propelled trolleys simultaneously used - Year 2010

Start from assembly site....



....transport on the dock...



ILVA Taranto Plant – Trasportation from assembly site to berrn on one big trap carbon crane TENOVA – total weight 2720 ton – N°7 self propelled trolleys simultaneously used - Year 2010

....transport on the dock...



...Special Lifting Supports...



Co.Na.Te.Co. S.p.A. – Port of Naples N°2 STS Cranes Weight 1.100 Ton each – 2 Step - Year 2010

Load on barge, sea transport and load-out of two portainer cranes from Monfalcone to Naples

Arrive in Napoli....



...Deck Fastening removing...



....transport on the dock...



**Co.Na.Te.Co. S.p.A. – Port of Naples N°2 STS Cranes
Weight 1.100 Ton each – 2 Step - Year 2010**

...transport on the dock....



...final destination



- Preparation on site, load-in on barge, sea transport and load-out of two portainer cranes STS from Greath Yarmouth (UK) to Venice
- Weight: 1100 Ton each – Year 2011

February-march 2011

The cranes on the dock in Greath Yarmouth.....the seafastening application.....



- Preparation on site, load-in on barge, sea transport and load-out of two portainer cranes STS from Greath Yarmouth (UK) to Venice
- Weight: 1100 Ton each – Year 2011

.....handling and loading cranes STS.....



- Preparation on site, load-in on barge, sea transport and load-out of two portainer cranes STS from Greath Yarmouth (UK) to Venice
- Weight: 1100 Ton each – Year 2011

.....the seafastening and deck fastening on the barge.....



- Preparation on site, load-in on barge, sea transport and load-out of two portainer cranes STS from Greath Yarmouth (UK) to Venice
- Weight: 1100 Ton each – Year 2011

....positioning on barge ...



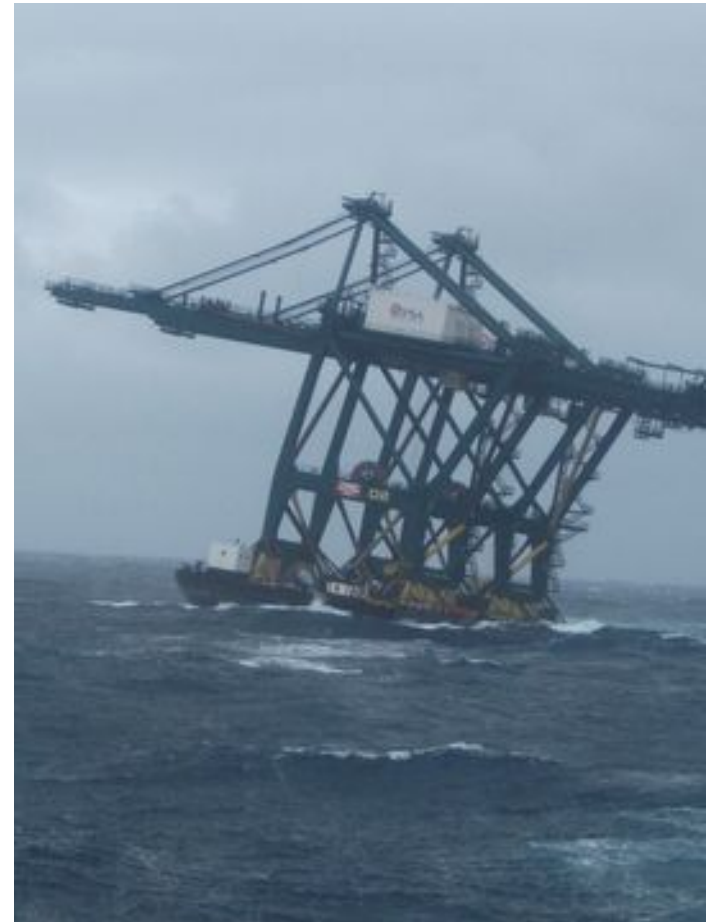
.... traveling to Venice.....



Great YARMOUTH (UK) - VECON – Port of Marghera (ITA) - Oceanic marine transportation



Great YARMOUTH (UK) - VECON – Port of Marghera (ITA) - Oceanic marine transportation



VECON – Port of Marghera - Structural revamping: change of the rail span of two ZPMC sts cranes

May-September 2011

Arrival of the barge in Venice...



...seafastening removing...



....barge cleaning....



Structural revamping: change of the rail span of two ZPMC sts cranes

.... crane structural strengthening



....change of rail span....



...moving to the final destination ...



...final destination.



- Preparation on site, load-in on barge, sea transport and load-out of two portainer STS TEREX from Monfalcone to Fos sur Mer - Weight: 1870 Ton each – Year 2011 - N°6 self propelled trolleys simultaneously used



- Preparation on site, load-in on barge, sea transport and load-out of two portainer cranes STS LIEBHERR from La Spezia to Casablanca
- Weight: 1000 Ton each – Year 2012

....removing deck fastening....



...moving to the final destination ...



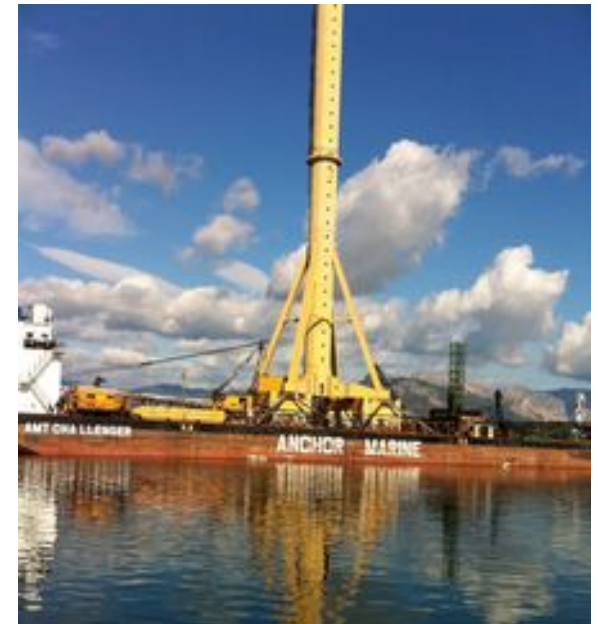
Trasportation and installations from Monfalcone (ITA) to Bayonne (FR) – N°1 RHC TEREX – Total weigth 680 Ton - Year 2011



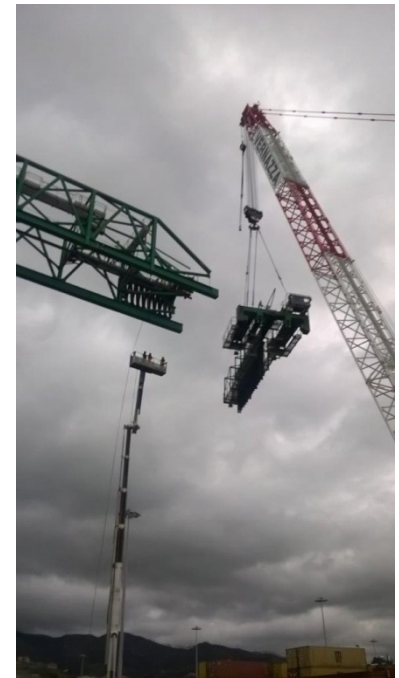
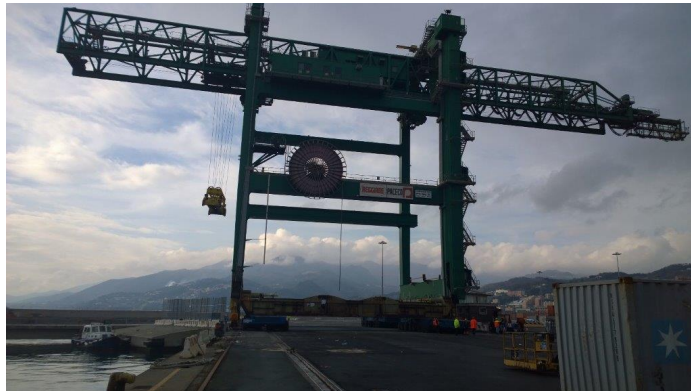
Trasportation and installations from Monfalcone (ITA) to Bayonne (FR) – N°1 RHC TEREX – Total weight 680 Ton - Year 2011



**Loading, sea transport and unloading of Cranes and devices from Melilli Yard (SR) to SAIPEM site Arbatax-
Total weight 980 Ton - Year 2012**



**V.T.E. – Voltri Terminal Europa – Genova Voltri
Disassembly and demolition of cranes Fantuzzi
2015-2016-2017.....**



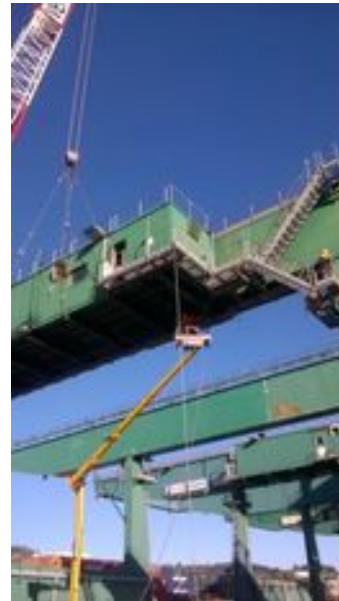
Eon Produzione C.le Fiumesanto Scaricatori di carbone DW1 e DW2 -2014....



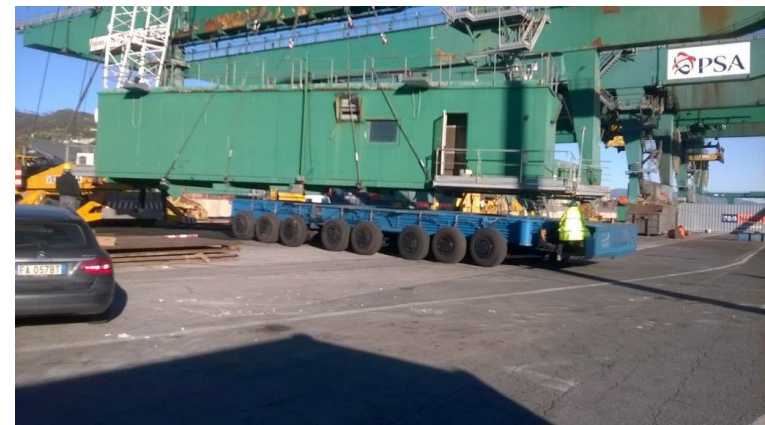
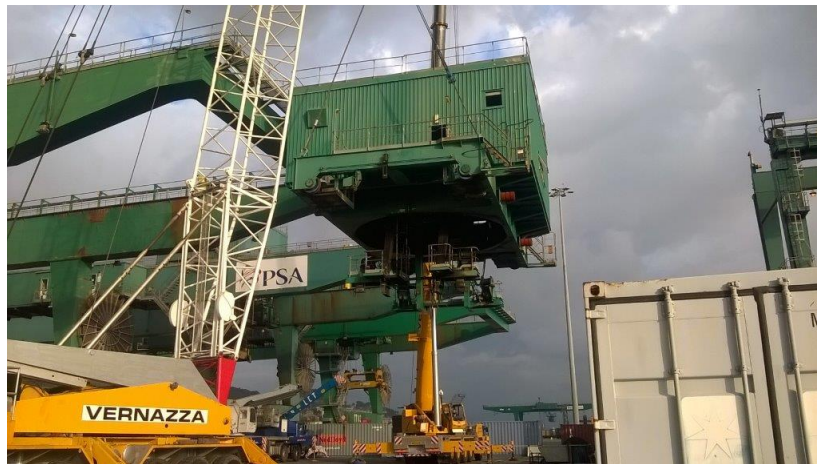
.....Eon Produzione C.le Fiumesanto Scaricatori di carbone DW1 e DW2 -2014



**V.T.E. – Voltri Terminal Europa – Genova Voltri
Transport, Disassembly and demolition of cranes Fantuzzi
2015-2016-2017**



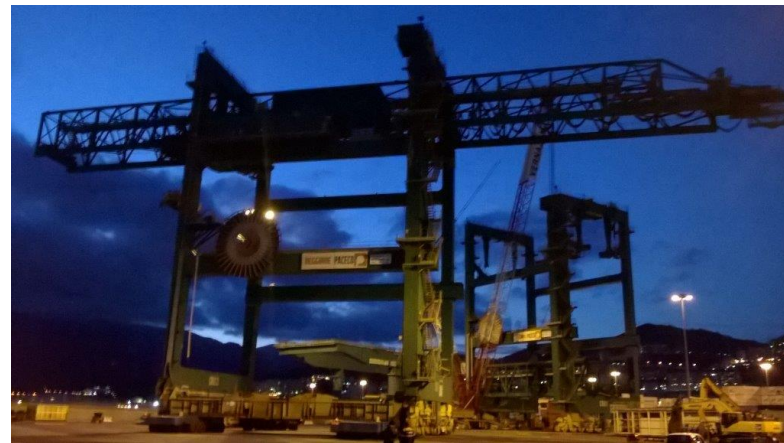
V.T.E. – Voltri Terminal Europa – Genova Voltri Transport, Disassembly and demolition of cranes Fantuzzi 2015-2016.....



V.T.E. – Voltri Terminal Europa – Genova Voltri Disassembly and demolition of cranes Fantuzzi 2015-2016.....



V.T.E. – Voltri Terminal Europa – Genova Voltri Disassembly and demolition of cranes Fantuzzi 2015-2016-2017

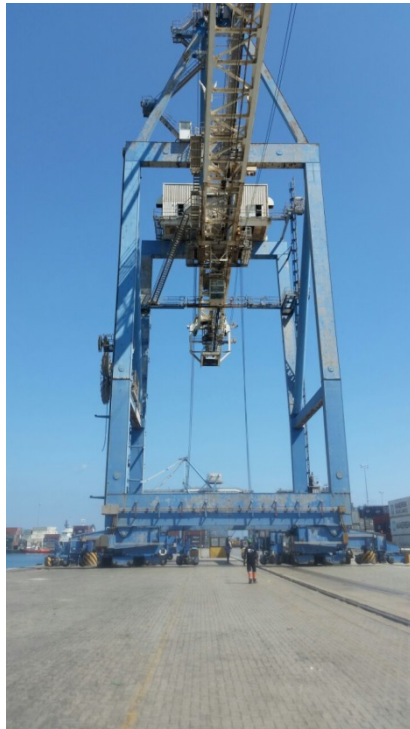


R.C.M. Costruzioni - Porto di Taranto
Shift TT04-TT05-TT06 – Renovation Molo Polisetoriale 2016



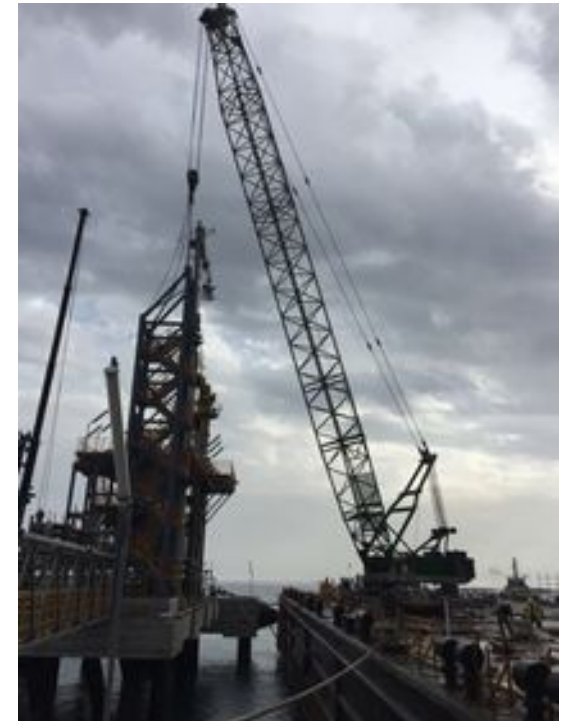
FREEPORT MALTA

Transport, Disassembly and demolition of cranes 2015-2016-2017



ELETTROGAS DELIMARA - MALTA

Construction and assembly carbon steel stair tower structur and aluminum gangway 2016.....



ELETTROGAS DELIMARA - MALTA

.....and aluminum gangway 2016



Costa Bioenergie Chioggia- Imbarco-trasporto – sbarco 2016

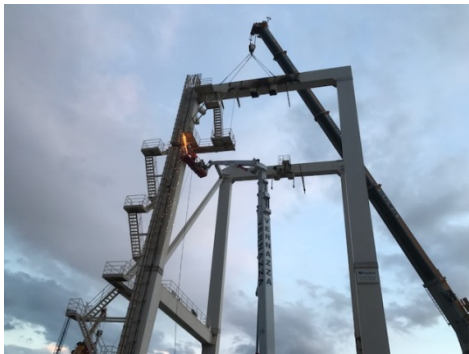


..... sbarco a Chioggia 2016



LUKA KOPER – PORTO DI KOPER – SLOVENIA

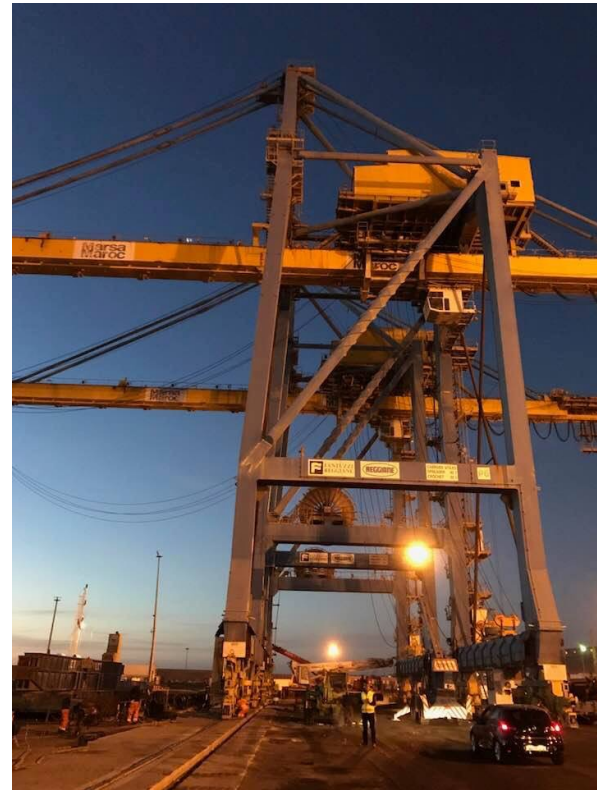
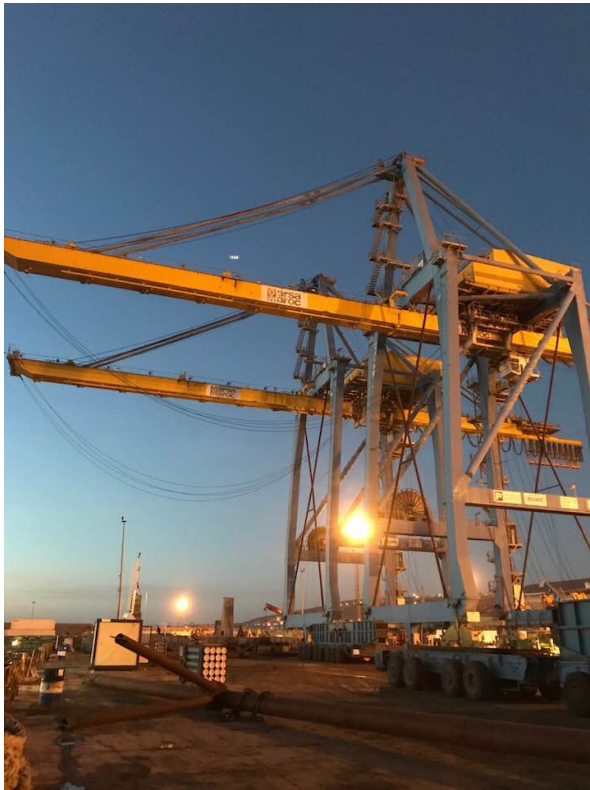
Disassembly and demolition of cranes Metalna KD53 - 2017



**MARSA MAROC – transport STS 6/7 and straddel carrier of the port
Casablanca to Port Agadir 2017.....**



MARSA MAROC – embarking STS 6/7 and straddel carrier of the port Casablanca to 2017



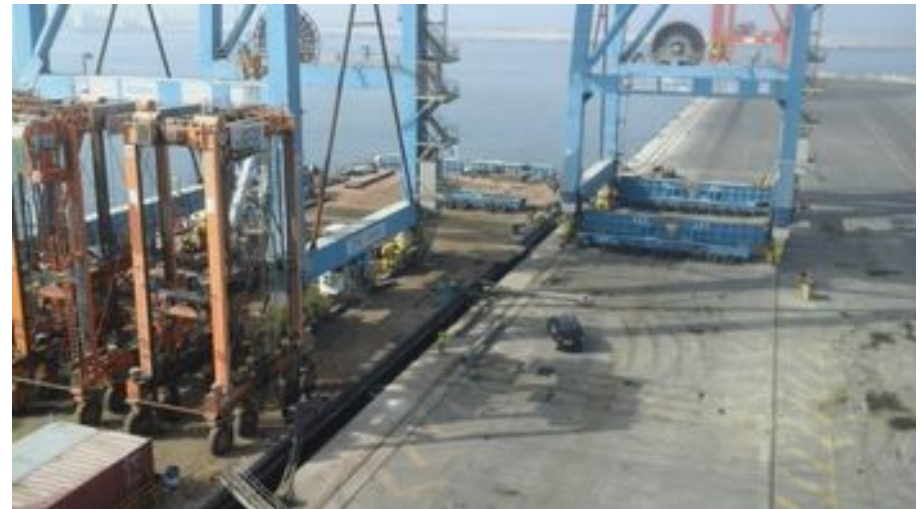
.....MARSA MAROC – transport for discharge STS 6/7 and straddel carrier to Port Agadir 2017.....



.....MARSA MAROC – discharge STS 6/7 and straddel carrier to Port Agadir 2017.....



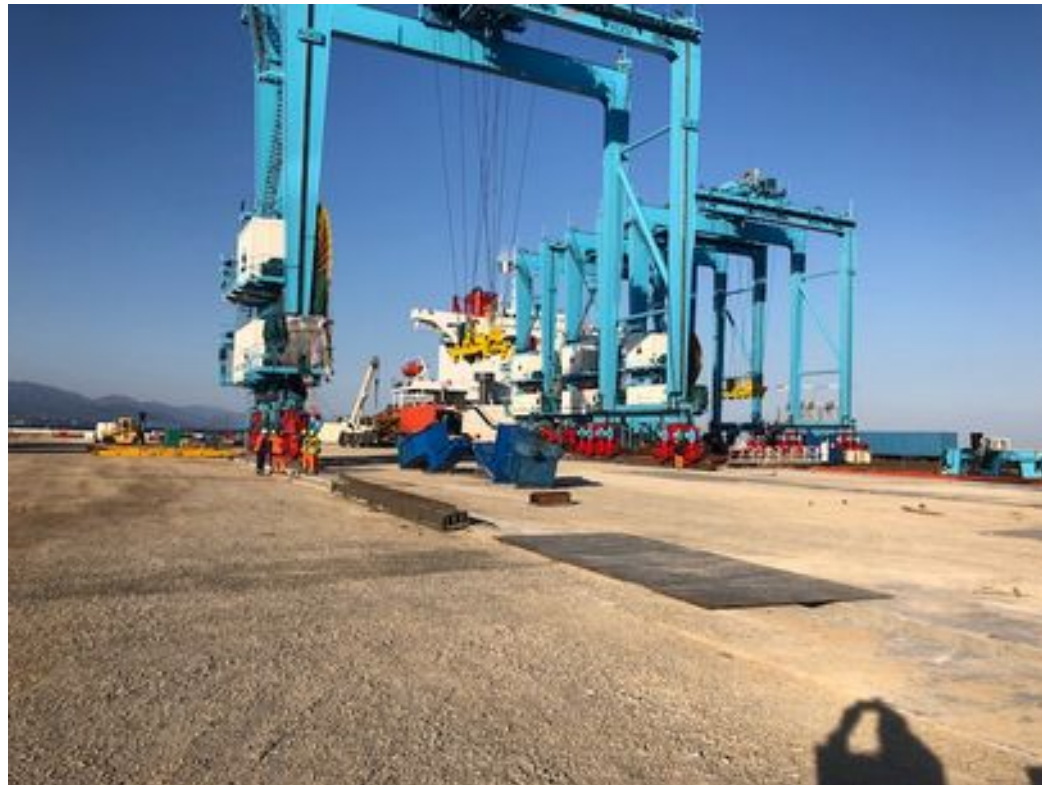
.....MARSA MAROC – discharge STS 6/7 and straddel carrier to Port Agadir 2017.....



.....MARSA MAROC – discharge STS 6/7 and straddel carrier to Port Agadir 2017



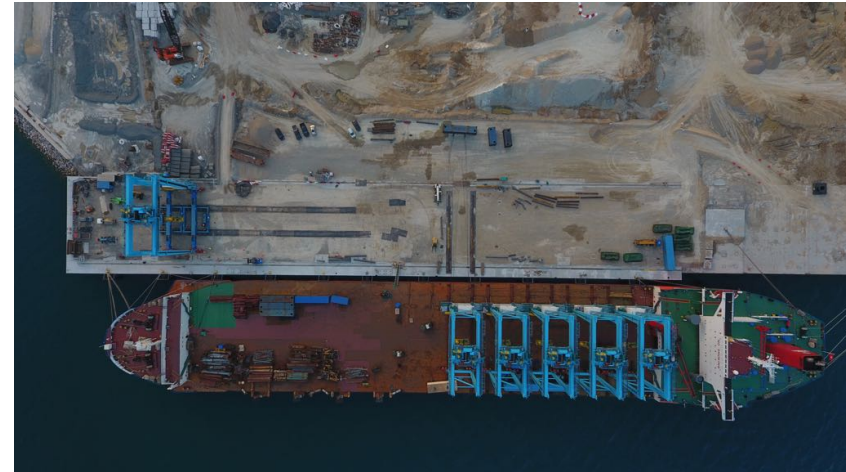
....ZPMC RELOCATION STS Port Vado Ligure Greenfield terminal
2018.....



ZPMC RELOCATION STS Port Vado Ligure Greenfield terminal 2018.....



...ZPMC RELOCATION STS Port Vado Ligure Greenfield terminal 2018.....



**V.T.E. – PSA - Voltri Terminal Europa – Genova Voltri
cranes Fantuzzi repair - CR 09- CR10- TT02- TT03 - 2018**

